

## STANDARD AUTOMATION



**OUR SYSTEM.  
YOUR SOLUTION.**

[www.MartinSystems.eu](http://www.MartinSystems.eu)



MartinSystems brochure  
on your mobile phone.

# OUR SYSTEM. ROBOCUBE.

Welcome to the world of MartinSystems!

At MartinSystems, the many years of experience and proven concepts of the innovative special machine builder MartinMechanic accumulate into a clever automation concept.

The advantages we offer you are clear:

- sophisticated machine concepts
- user-friendly operation
- short delivery times
- fast integration into your production process
- favorable prices

We look forward to seeing you!



# ROBOCUBE

Gebaut für  
Langstrecken:  
der RoboCube.

## LOADING AND UNLOADING



**MRC 242499**

**RoboCube Maxi.**

**Efficient loading through the automatic side door of a processing machine.**

The front door of the processing machine remains freely accessible. The three drawer positions for work creation, middle position and working position allow the insertion/removal of unfinished and finished parts during ongoing automatic operation. All functions can be selected on the generously designed 7" touch panel.



**MSY 242206**

**RoboCube Speedy 200.**

**Flexible automation cell during loading through the front door of a processing machine.**

The three drawer positions for work creation, middle position and working position enable the insertion/removal of unfinished and finished parts during ongoing automatic operation. All functions can be selected via the generously designed 7" touch panel. The lateral cell arrangement allows good accessibility also with conventional loading.



**MPC 242065**

**RoboCube Easy.**

**Compact loader.**

Simple and compact RoboCube cell with space for small extensions. The cell front is open and faces the processing machine. The side walls are adapted to the contour of the processing machine and close the protected area. The cell has a parts storage for two trays/KLT's with a maximum size of 600x400mm each.



**MNL 2425903**

**NeoLoader.**

**Mobile loader.**

Mobile workstation with collaborative 6-axis robot with a handling weight of up to 16kg. The mobile workstation on castors stands out as a flexible and individually deployable unit. The collaborative robot allows various handling processes to be automated quickly and easily with little programming knowledge.



## LOADING AND UNLOADING, SORT



## MBR 241804

**RoboCube zero point clamping system.****Workpieces and tools in holders.**

Workpieces located in zero point clamping systems require special storage options. In storage racks, these are stored in a position-safe and precise manner. Depending on the workpiece/tool size, the storage rack has a storage capacity of up to 48 staging locations.



## MRK 242126

**RoboCube Rack.****Space saving and safely stored.**

Valuable and sensitive parts need to be stored safely. The pallet rack is fully integrated into the RoboCube. Complete traceability of the parts under controlled conditions is thus possible. Our customers from the medical technology, watch and jewelry industries are keen to use this parts stocking system.



## MFS 242377

**RoboCube FlexSorter 43.****Sorting and Palletizing.**

The combination of parts supply, image processing and 4-axis robot enables autarkic sorting of workpieces. Parts are supplied as bulk material - sorted and palletized by the robot in 2D. The cell is indispensable for handling sensitive parts or for parts with a large number of variants.

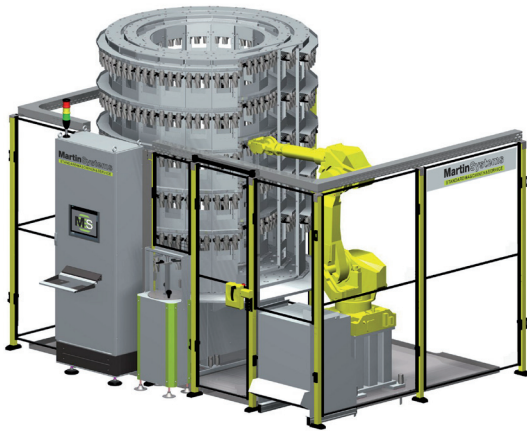


## MBS 242529

**RoboCube BinSorter 64.****The reach into the box.**

The combination of parts supply, image processing and 6-axis robot enables autarkic sorting of workpieces. Parts are supplied as bulk material in a box - sorted and palletized by the robot in 3D. The cell is ideal for handling sensitive parts or parts with a large number of variants.

## STORAGE, HEAT TREATMENT

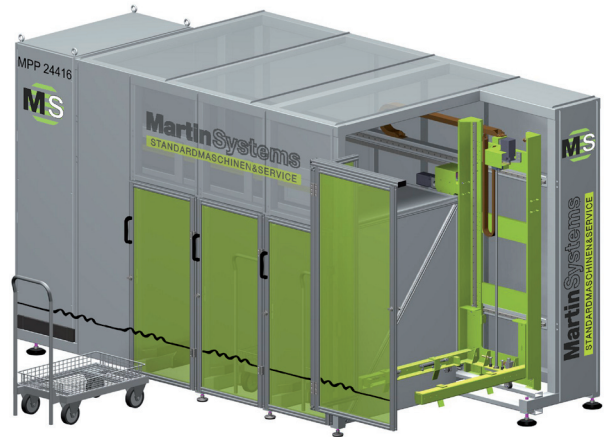


### MEM 6384

#### Tool magazine.

**Tool storage for up to 2.500 tools for the expansion of the machine tool.**

The tool magazine consists of three trays, one inside the other, with the outer trays open to enable access to the inner trays when positioned appropriately. The tools are handled by a 6-axis robot. The tools can be inserted or removed by the operator at the insertion station.



### MPP 24416

#### Pallet pro 86.

**Ideal provision for heavy parts in large quantities.**

The pallets or baskets are supplied via carts. The carts are inserted into the processing shafts at ground level and do not require any effort. The pallet pro ensures that a pallet or basket is always available for the downstream loading handling system.

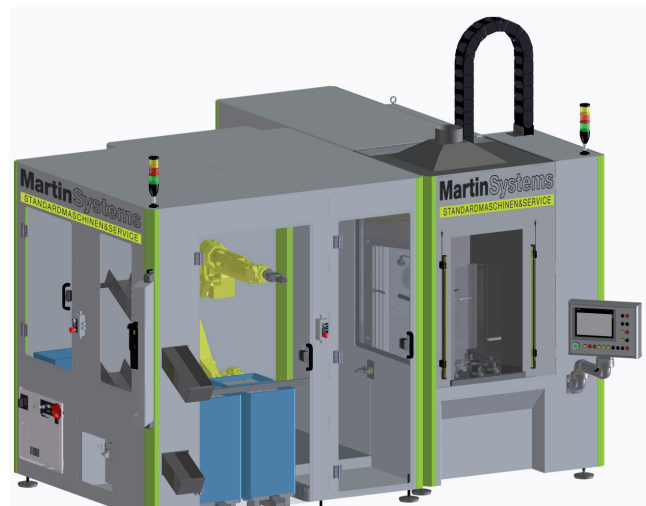


### MPA 241331

#### Automated loading system with mesh boxes.

**Small, fast and efficient.**

Blanks are provided to the robot in a mesh box with an intermediate layer and fed to the subsequent automation system. The finished parts are systematically deposited in an additional mesh box. A double gripper allows the intermediate layers to be handled safely.



### MIH 750

#### Universal induction hardening machine.

**Combination of hardening machine plus automation.**

The system of the induction hardening machine is based on many years of experience. Thus, the changeover from hardening on the highly dynamic central axis to indexing table operation can be accomplished in just a few steps. In addition, the design of the central workpiece fixture allows the insertion of long shafts where hardening operations are to be performed on the front side.

## STORAGE, AMR

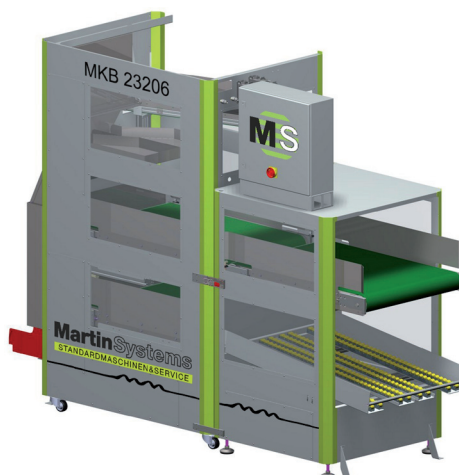


MBB 12315

**Box handling 16-fold.**

**Box handling on the injection molding machine.**

Empty boxes are provided to the injection molding handling system via the two upper feed belts and a lift unit. The finished parts are deposited on the cooling section and transferred to a box at the end of the conveyor. The loaded boxes are removed by the two lower discharge conveyors. Optimal for supply by AMR

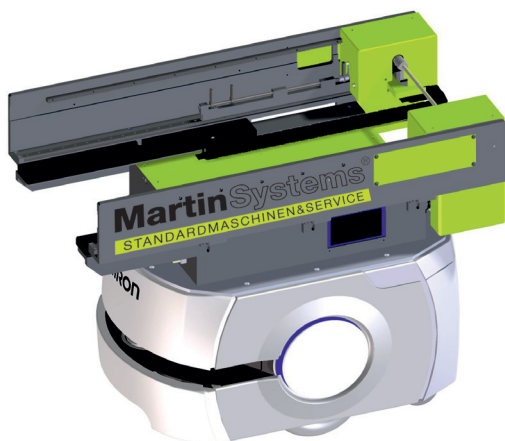


MKB 23206

**Cardboard provision.**

**Cardboard provision on the injection molding machine.**

Empty cartons are provided, loaded and stored for receiving finished parts or semi-finished products. Test or NIO parts can be discharged separately by a diverter. Sprues leave the carton supply via a separate belt.



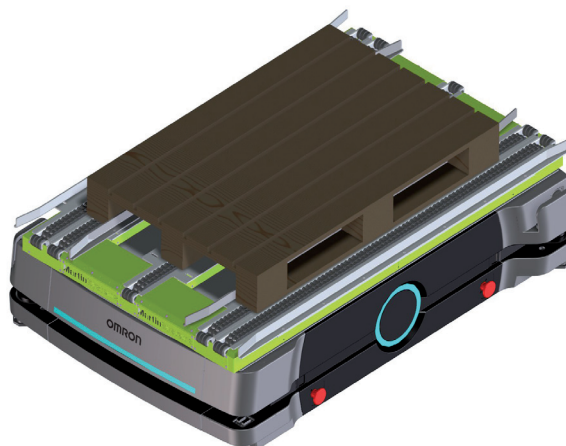
MMM 08703

**MagMover.**

**AMR with axis kinematics.**

Transport packs can be picked up and delivered from a passive station via fully integrated axis kinematics. From the shelf - to the shelf without conveyor belt!

Please refer to our AMR catalog on the website.



MFM 08XYZ

**FlatMobil.**

**AMR with ultra-flat conveyor platform.**

Various pallets and product containers can be transported via an ultra-flat conveyor.

Loads of up to 1,300kg are possible. The system is fully integrated into the AMR's control system.

Please refer to our AMR catalog on the website.

## AMR

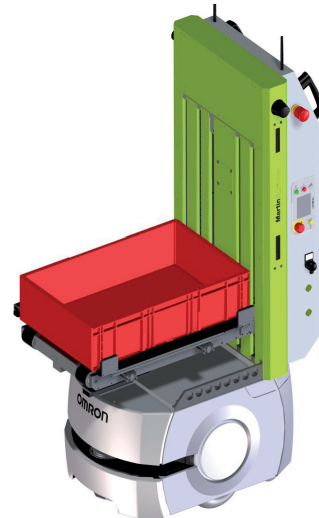


### MTT 08446

#### Transporter.

##### Driverless transport system with its own intelligence.

Intelligent, driverless transport system (DTS) with a payload of up to 90 kg for unmanned KLT exchange transport. Orientation takes place without additional assistance and can be easily integrated into the existing infrastructure. The DTS is ideally suited for data connections to superordinate warehouse or ERP systems. The transfer of the Transport containers takes place by means of a driven belt conveyor.



### MTL 08469

#### Transporter with Lift.

##### AMR with liftsystem.

Transport containers with a footprint of 600mm x 400mm are moved through the internal production process at various heights. The lift positions electrically at any desired height. The transfer of the conveyed goods is done by a driven double track conveyor belt. Please refer to our AMR catalog on our website.



### MHP 08500

#### Mechafant®-PJ.

##### Pick up pallets from the floor.

The mechafant® transports safely europallets up to 1,2m x 1,0 m with a weight of to 800 kg in production. It can be stored at a height of up to 500mm.

Please find more information on [www.martinsystems.eu](http://www.martinsystems.eu).



### MKB 08581

#### Transporter with High-Lift.

##### Product carrier.

The High-Lift pick up product carrier up to 3,5m above the floor and serve a multi-level kanban shelf. The conveyed goods are transferred by means of a driven double-track conveyor belt. The lift positions electrically at any required height.

Please find more information on [www.martinsystems.eu](http://www.martinsystems.eu).

*YOUR  
personal  
Note!*

**SUCCESS THROUGH A PRODUCTIVE FUTURE!**

**MartinSystems GmbH**

Werner-von-Siemens-Strasse 11 | 72202 Nagold (Germany)  
Tel. +49 7452 84667-0 | Fax +49 7452 8466572  
[info@MartinSystems.eu](mailto:info@MartinSystems.eu)

More informationen about our standard machinery please find on  
[www.MartinSystems.eu](http://www.MartinSystems.eu)

